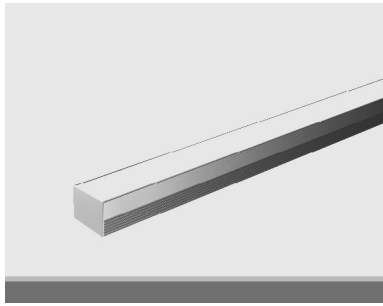
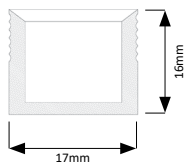


**DESCRIPTION:**


Architectural, rigid, linear luminaire system in discrete and continuous lengths for glare free, effective & efficient illumination.  
 Low profile extruded aluminium housing & heat sink with integrated diffuser. 96lm/W LED engine.  
 Modular, tool less, interchangeable component design:  
 - Distribution lenses (30 & 60 lens & 120 degree homogeneous opal diffuser options) - Outer Housing (white, black & anodised aluminium options)  
 IP33 standard with IP65 & IP67 options, MacAdam Ellipse 2 LED, CRI > 80 & > 90, 30,000 (LM80) operating hours, 3 year standard warranty, Pluggable pre-terminated Tridonic / Philips driver as standard.

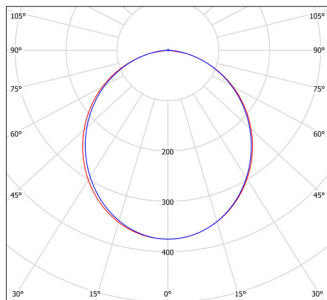
**SPECIFICATIONS:**

Standard Length: 2500mm



Mains Voltage (V)	220-240	Operational Hours	30,000 (LM80)
Mains Frequency (Hz)	50-60	Operating Temp (°C)	-20 to +45
Ingress Protection (IP)	33	Body*	Extruded Aluminium
Optional (IP)	65/67	Finish*	Anodised Aluminium
MacAdam Ellipse	2 SDCM	Optic Lens*	Opal Diffuser
CRI	>80	Warranty	3 Years
Efficiency (lm/W)	Up to 96		

\* Housing / Trim / Diffuser

**PERFORMANCE:**


PARAMETER	STANDARD	OPTIONS
A Model:	LEDPro Deep (LPD)	
B CRI:	8 : >80	9 : >90
C CT:	30 : 3000K	27 : 2700K, 40: 4000K, T: Tunable, RGB: RGB
D Load:	10 : 9.4W/m	5 : 4.7W/m, 15: 13.8W/m, 20: 18.5W/m
E Beam:	W : Wide (120)	N : Narrow (30), M: Medium (60)
F Ingress:	33 : IP33	65 : IP65, 67: IP67
G External Finish:	A : Anodised	W : White, B: Black
H Baffle Finish:	N/A	
I Control:	S : Switched	D : 1-10V, DA: DALI, P: Phase
J Accessories:		

**ORDERING:**

Please contact us for other specific product options, variants and finishes:  
[Hello@Chiaralighting.com](mailto:Hello@Chiaralighting.com)

**CODE BUILDER**

A	B	C	D	E	F	G	H	I	J
LPD	8	30	10	W	33	A	-	S	-

**STANDARD ORDER CODES:**

LPD.8.30.20.W.33.A.S  
 LPD.8.30.15.W.33.A.S  
 LPD.8.30.10.W.33.A.S  
 LPD.8.30.5.W.33.A.S

**SUPPLY VOLTAGE:  
(V)**

24  
24  
24  
24

**LUMINAIRE OUTPUT:  
(lm)**

1,171  
899  
605  
301

**TYPICAL PRODUCT DESCRIPTION:  
(Example)**

LEDPro Deep, 3000K, 18.5W/m  
 LEDPro Deep, 3000K, 13.8W/m  
 LEDPro Deep, 3000K, 9.4W/m  
 LEDPro Deep, 3000K, 4.7W/m

