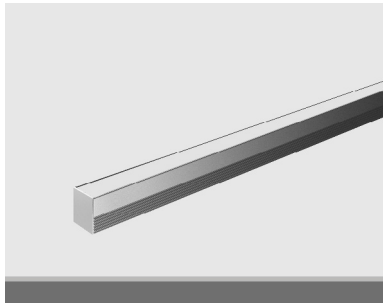
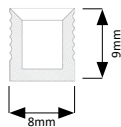


DESCRIPTION:


Architectural, rigid, linear luminaire system in discrete and continuous lengths for glare free, effective & efficient illumination.
 Low profile extruded aluminium housing & heat sink with integrated diffuser. 96lm/W LED engine.
 Modular, tool less, interchangeable component design:
 - Outer Housing (white, black & anodised aluminium options)
 IP33 standard with IP65 & IP67 options, MacAdam Ellipse 2 LED, CRI > 80 & > 90, 30,000 (LM80) operating hours, 3 year standard warranty, Pluggable pre-terminated Tridonic / Philips driver as standard.

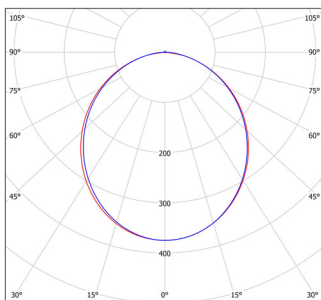
SPECIFICATIONS:

Standard Length: 2500mm



Mains Voltage (V)	220-240	Operational Hours	30,000 (LM80)
Mains Frequency (Hz)	50-60	Operating Temp (°C)	-20 to +45
Ingress Protection (IP)	33	Body*	Extruded Aluminium
Optional (IP)	65/67	Finish*	Anodised Aluminium
MacAdam Ellipse	2 SDCM	Optic Lens*	Opal Diffuser
CRI	>80	Warranty	3 Years
Efficiency (lm/W)	Up to 96		

* Housing / Trim / Diffuser

PERFORMANCE:


PARAMETER	STANDARD	OPTIONS
A Model:	LEDPro Narrow (LPN)	
B CRI:	8 : >80	9 : >90
C CT:	30 : 3000K	27 : 2700K, 40: 4000K,
D Load:	10 : 8.7W/m	
E Beam:	W : Wide (120)	
F Ingress:	33 : IP33	65 : IP65, 67: IP67
G External Finish:	A : Anodised	
H Baffle Finish:	N/A	
I Control:	S : Switched	D : 1-10V, DA: DALI, P: Phase
J Accessories:		

ORDERING:

Please contact us for other specific product options, variants and finishes:
Hello@ChiaraLighting.com

CODE BUILDER

A	B	C	D	E	F	G	H	I	J
LPN	8	30	10	W	33	A	-	S	-

STANDARD ORDER CODES:
LPN.8.30.10.W.33.A.S
**SUPPLY VOLTAGE:
(V)**

12

**LUMEN OUTPUT:
(lm/m)**

517

**TYPICAL PRODUCT DESCRIPTION:
(Example)**

LEDPro Narrow, 3000K, 8.7W/m