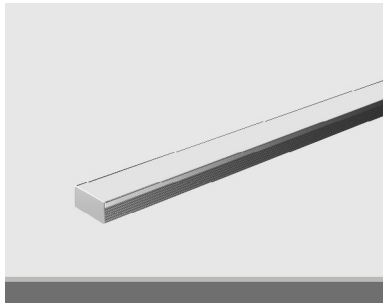
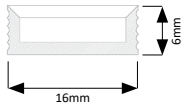


DESCRIPTION:


Architectural, rigid, linear luminaire system in discrete and continuous lengths for glare free, effective & efficient illumination.
 Low profile extruded aluminium housing & heat sink with integrated diffuser. 96lm/W LED engine.
 Modular, tool less, interchangeable component design:
 - Distribution lenses (30 & 60 lens & 120 degree homogeneous opal diffuser options) - Outer Housing (white, black & anodised aluminium options)
 IP33 standard with IP65 & IP67 options, MacAdam Ellipse 2 LED, CRI > 80 & > 90, 30,000 (LM80) operating hours, 3 year standard warranty, Pluggable pre-terminated Tridonic / Philips driver as standard.

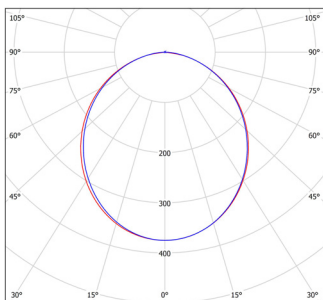
SPECIFICATIONS:

Standard Length: 2500mm



Mains Voltage (V)	220-240	Operational Hours	30,000 (LM80)
Mains Frequency (Hz)	50-60	Operating Temp (°C)	-20 to +45
Ingress Protection (IP)	33	Body*	Extruded Aluminium
Optional (IP)	65/67	Finish*	Anodised Aluminium
MacAdam Ellipse	2 SDCM	Optic Lens*	Opal Diffuser
CRI	>80	Warranty	3 Years
Efficiency (lm/W)	Up to 96		

* Housing / Trim / Diffuser

PERFORMANCE:


PARAMETER	STANDARD	OPTIONS
A Model:	LEDPro RGB Slim (LPRGBS)	
B CRI:	8 : >80	9 : >90
C CT:	RGB : RGB	
D Load:	15 : 13.8W/m	
E Beam:	W : Wide (120)	N : Narrow (30), M: Medium (60)
F Ingress:	33 : IP33	65 : IP65, 67: IP67
G External Finish:	A : Anodised	W : White, B: Black
H Baffle Finish:	N/A	
I Control:	DM : DMX	
J Accessories:		

ORDERING:

Please contact us for other specific product options, variants and finishes:
Hello@ChiaraLighting.com

CODE BUILDER

A	B	C	D	E	F	G	H	I	J
LPS	8	RGB	15	W	33	A	-	DM	-

STANDARD ORDER CODES:
LPS.8.RGB.15.W.33.A.S
**SUPPLY VOLTAGE:
(V)**

24

**LUMEN OUTPUT:
(lm/m)**

542**

**TYPICAL PRODUCT DESCRIPTION:
(Example)**

LEDPro RGB Slim, 13.8W/m

** Lumen output will vary on colour combination selected

